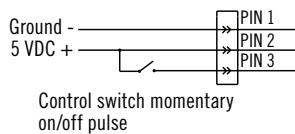
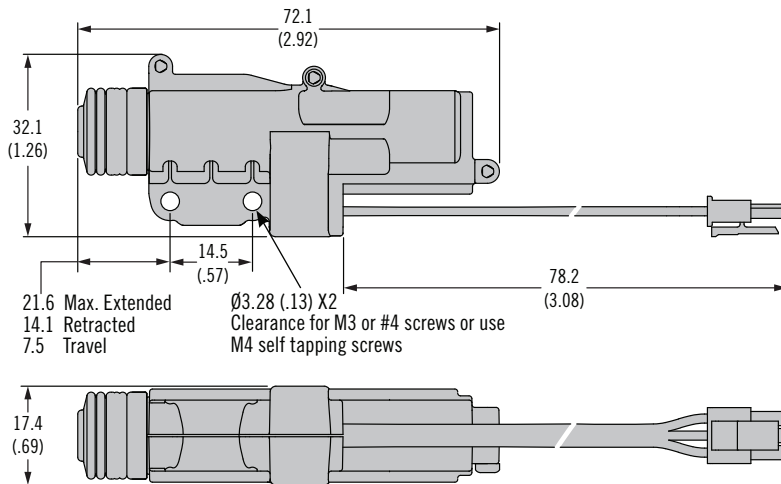


AC-EM-10 Electro-Mechanical Actuator

Compact Size



39B



PIN 1: Ground (-) brown wire

PIN 2: Power (+) red wire

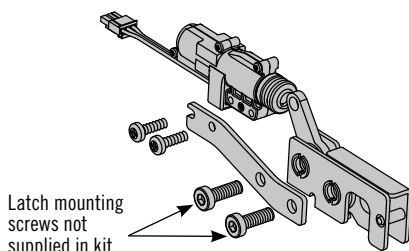
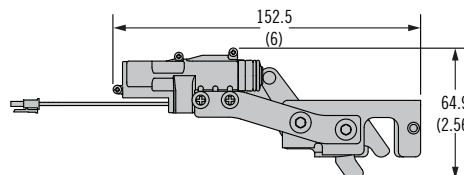
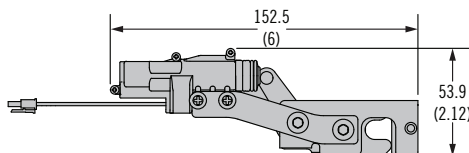
PIN 3: Control signal (+) orange wire

Part Number	Supply Voltage	Connector Type
AC-EM-100-5011	5V	with Molex brand Microfit 3.0 connector
AC-EM-100-5021	5V	without connector (stripped and tinned)

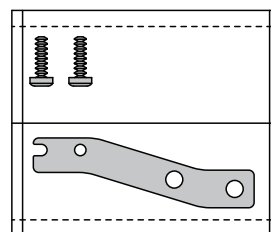
Note: For Bulk Packaging, add -1 suffix to part number

Optional Mounting Kit

For R4-10 Rotary Latches (latch and actuators sold separately)



Latch mounting screws not supplied in kit



Kit consists of mounting plate and 2 self-tapping screws
AC-EM-059-1

- Efficient gear motor driven actuator
- Sealed to IP55
- Versatile solution for Electrically actuating latching mechanisms
- Economical upgrade for Southco R4-10 Rotary Latch from mechanical to electrical actuation
- Available with 3 Pin Connector or stripped and tinned

Material & Finish

Enclosure, Output Cam: Nylon, Acetal
Housing Assembly Screws: Steel, Zinc Plated

Electronic Specifications

Supply Voltage: 5 +/- 10%

Operating Current:

Less than 300 mA

Operating Temperature:

-20°C - 60°C

Operating Humidity: 85% max

No condensation

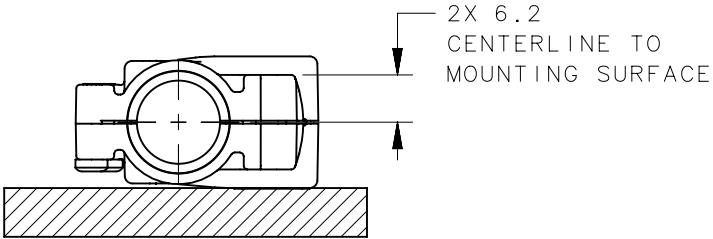
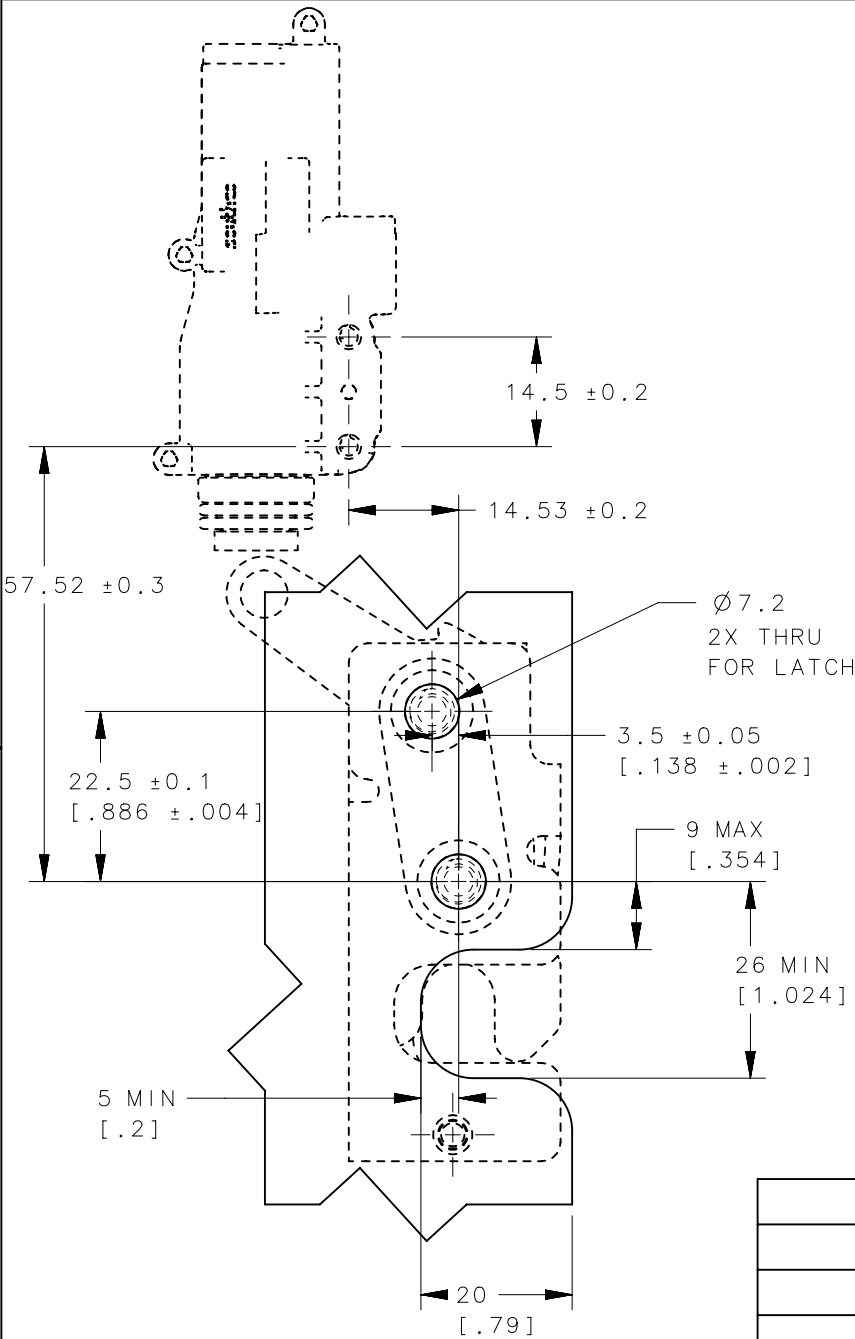
Notes

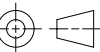
Connector version uses Molex brand Microfit 3.0

REVISION HISTORY			
REV	DATE	BY	DESCRIPTION
E	16AUG2018	DJG/KAM	PRN: P2018-1945

NOTES

- THE AC-EM-10 ACTUATOR IS COMPATIBLE WITH BOTTOM ACTUATED R4-10 ROTARY LATCHES
PART NUMBERS: R4-10-1X-501-XX AND R4-10-2X-501-XX. SEE J-R4-10-10-501, J-R4-10-20-501 FOR LATCH INFORMATION.
 - R4-10 LATCH AND NECESSARY MOUNTING HARDWARE SOLD SEPARATELY.
 - AN OPTIONAL MOUNTING KIT INCLUDING A MOUNTING PLATE AND SCREWS IS AVAILABLE FOR USE WITH SOUTHCO R4-10 SERIES ROTARY LATCH
SEE J-AC-EM-059-1 FOR PART NUMBERS AND MORE INFORMATION.
 - MAXIMUM ALLOWABLE TORQUE WITH ACTUATOR M4 THREAD FORMING SCREWS
IS 226 N.cm [20 in.lbs]
 - MAXIMUM ALLOWABLE TORQUE WITH R4-10 LATCH 550 N.cm [48 in.lbs]
 - CONTACT SOUTHCO FOR RECOMMENDED ACCESSORIES.
- CAUTION! IT IS IMPORTANT TO NOT OBSTRUCT THE MOTION OF THE LATCH TRIGGER DURING ELECTRICAL OPERATION TO PREVENT LONG TERM DAMAGE TO THE ELECTRICAL COMPONENTS IN THE ACTUATOR.



	THIRD ANGLE PROJECTION		southco® CONNECT • CREATE • INNOVATE			
	MILLIMETERS [IN]					
	TOLERANCES UNLESS OTHERWISE NOTED		DESCRIPTION			
	ALL DIMENSIONS WITHOUT TOLERANCES ARE FOR REFERENCE ONLY.		ELECTRONIC ACCESS SOLUTION ELECTRO-MECHANICAL ACTUATOR			
PROPRIETARY ITEM <small>EXCEPT FOR USES EXPRESSLY GRANTED IN WRITING, INFORMATION DISCLOSED HEREON IS CONFIDENTIAL AND ALL RIGHTS, PATENT AND OTHERWISE, ARE RESERVED BY SOUTHCO, INC.</small>			SIZE A4	SYSTEM NX	DWG NO. J-AC-EM-10-1	
	PER ASME Y14.5M-1994		DRAWN BY DJG/KAM	DATE 16AUG2018	SCALE 1:1	SHEET 2 OF 2