

Product Information Hand Switch Easy2move

SUSPA



geht voran!
goes ahead!



funktioniert!
functions well!



hat Zukunft!
for the future!



verbindet!
brings together!

Features

Compatible with all LOGICDATA controllers

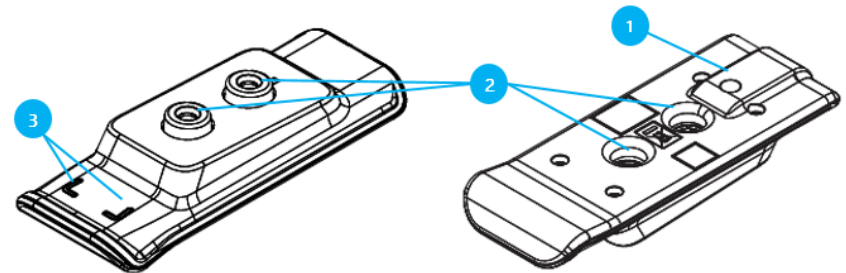
Intuitive, easy handling (press toggle switch up or down until the desired position is reached)



1 Memory button on the bottom of the manual switch (2 memory positions possible)

2 Easy mounting under the table top

3 LED to display the system information



Technical Specification

	Dimensions (L x W x H):	122 x 48 x 26 mm
	Weight:	108 g
	Cable length:	1800 mm
	Protection	IP20
	Standards and Regulations:	EMV directive 2014/30/EU; RoHS directive 2011/65/EU; Dodd-Frank Act (1502)



Further information www.logicdata.net/product/easy2move-2/

SUSPA GmbH

Industriestr. 12-14
90518 Altdorf
Germany

Phone +49 9187 930 0
infoindustry@de.suspa.com
www.suspa.com



geht voran!
goes ahead!



funktioniert!
functions well!



hat Zukunft!
for the future!



verbindet!
brings together!